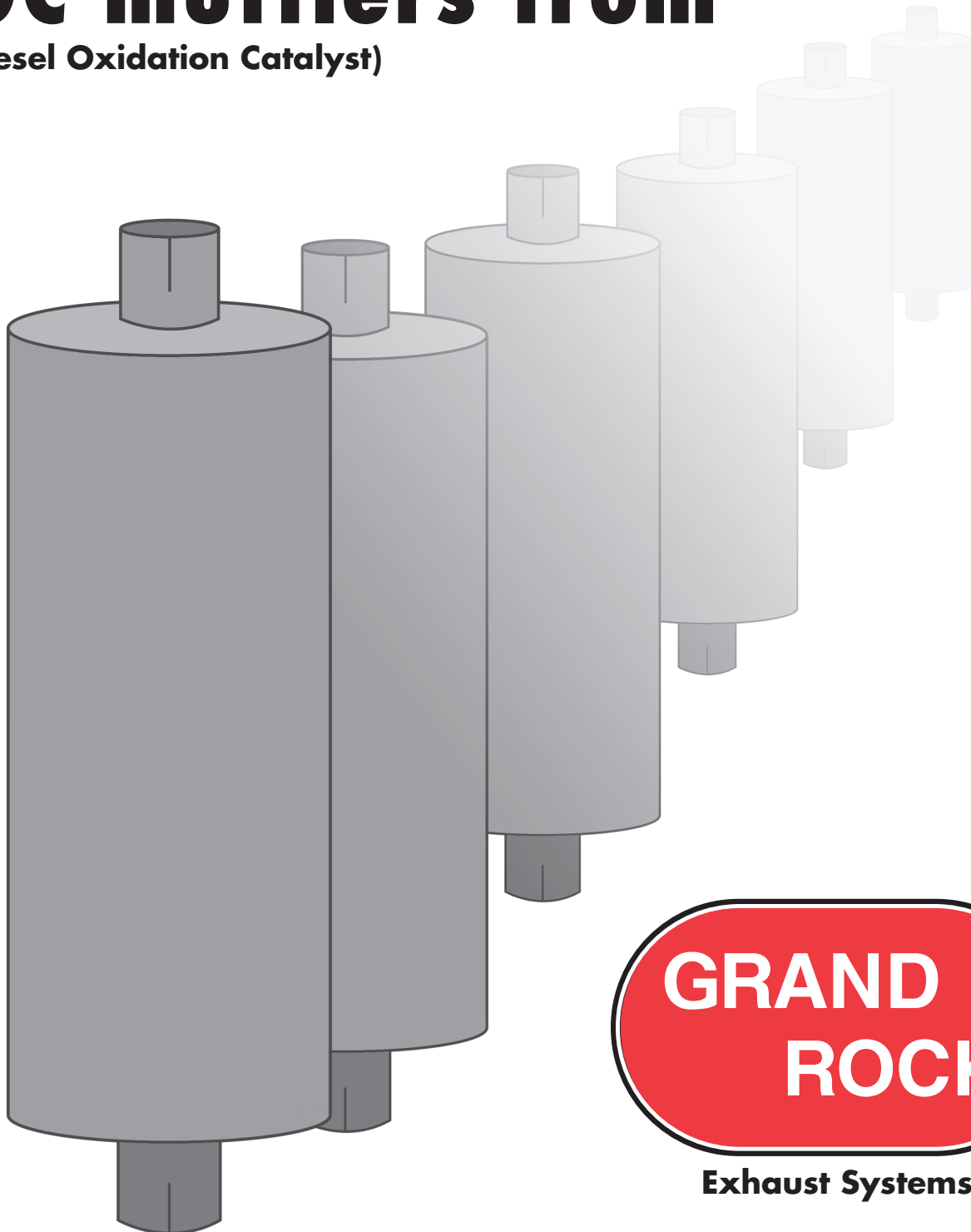


INTRODUCING

**a complete line of
DOC mufflers from**
(Diesel Oxidation Catalyst)



**GRAND
ROCK**

Exhaust Systems

- **49 State EPA Compliant**
- **Up to 25% PPM reduction**
- **Retrofit or Replacement**
- **Stainless Steel Substrate will not crumble or break like ceramic**
- **All stainless steel construction**
- **Proven Technology**
- **In Stock for fast turnaround**
- **100% American made**

Anatomy of the BEST DOC on the market!



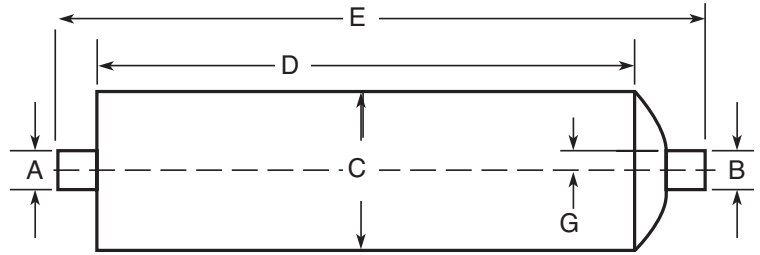
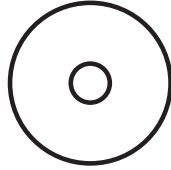
← **Stainless Steel
Throughout Complete Unit**

← **Stainless Steel
Substrate (brick)**

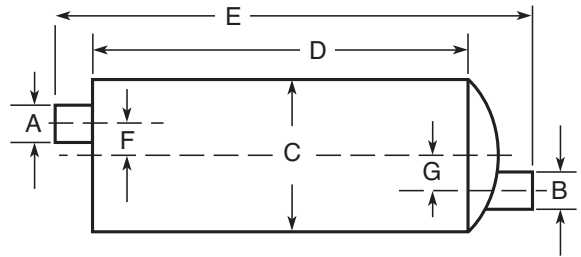
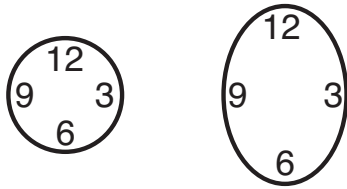
← **100% Laser Welded
for Durability**

TYPES AVAILABLE

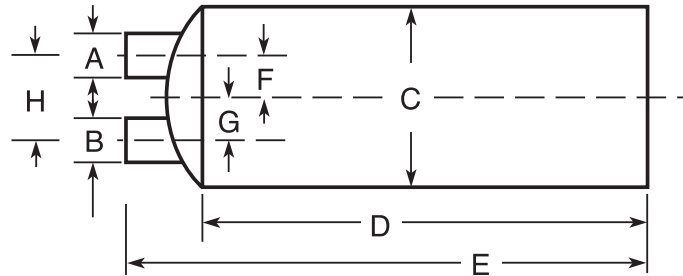
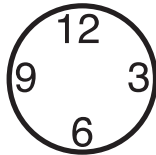
Type 1



Type 2



Type 3



Part #	Style	Inlet ID	Outlet ID	Inlet Position	Outlet Position	Inlet Offset	Outlet Offset	Cross Section	Shell Length	Overall Length
M-1465CT	1	5"	5"	0	0	0	0	10"	44.5"	51"
all engines up to 8.9L, single application										
M-1044CT	1	5"	5"	0	0	0	0	10"	44.5"	51"
ANY 4 cycle engine brand ,13L to 16L, single application										
M-355CT	1	4"	4"	0	0	0	0	11"	36"	41"
all engines up to 8.9L										
M-1465CT	1	5"	5"	0	0	0	0	10"	44.5"	51"
CAT C13 & C15 dual application rep# M101283										
M-580CT	2	3.5"	4"	6	12	2.75"	2.75"	8.25x11.5"	29.5"	36.5"
all IH DT & VT engines up to 8.9L, repH #: 2595714C91 & 3589192C1										
M-581CT	2	4"	4"	6	12	2.5"	2.5"	11"	36"	41"
all engines up to 8.9L										
M-834CT	3	5"	5"	6	12	3"	3"	12"	36"	41"
CAT C13 & C15 dual application rep# M120834										

Bent on Excellence

395 Fountain Avenue, Painesville, OH 44077
 440.639.2000 local • 800.321.3674 N. America
 www.grandrock.com • Email: sales@grandrock.com



Exhaust Systems